

EZ-OFFICE 2010 SOFTWARE

FIELD RECORD KEEPING AND MAPPING FOR GROWERS AND AGRIBUSINESSES



INTRODUCING THE NEW EZ-OFFICE 2010 SOFTWARE

EZ-Office™ software is a desktop software application targeting growers and agribusinesses who want farm management record keeping and reporting that seamlessly links records and data collection to Trimble displays.

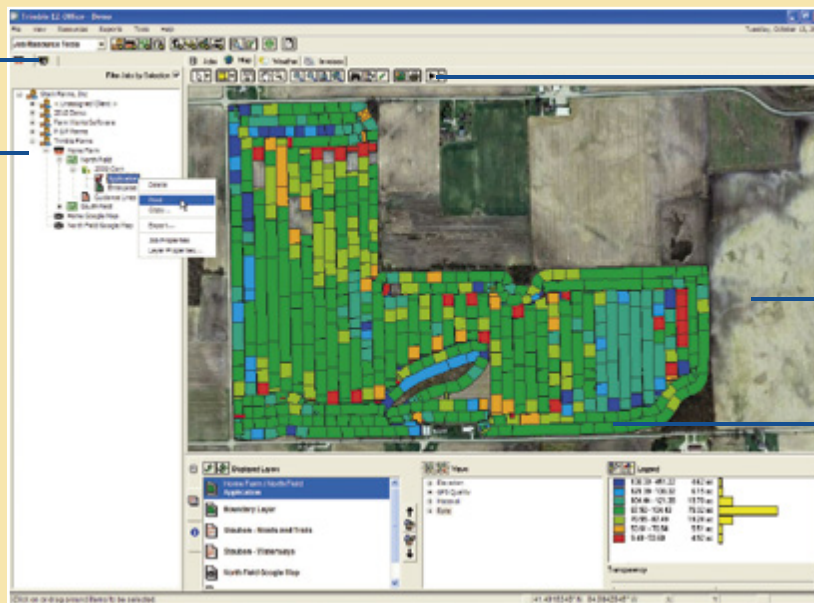
EZ-Office software allows you to read and write data to the Trimble® EZ-Guide® 250 and EZ-Guide 500 systems, and the AgGPS® FmX™ integrated display. If using other displays for collecting yield data or other important job information, EZ-Office software is fully compatible and combines data into one software program. EZ-Office software integrates your field records, maps, and reports to provide a complete management solution.

EZ-Office software is a product within the Trimble Connected Farm™ suite of information management solutions optimizing connectivity of in-cab systems and information management between the field and office.



Keep track of operator, staff and input records

Easy to search field records within a client, farm, field, job, crop hierarchy to match Trimble displays



Replay a field event using the coverage animation tool to see direction of travel and other operation behavior

Utilize Google™ Maps for drawing field boundaries or to display as background maps

Graphical map window displays field coverage map and as-applied maps as proof of the job performed

EZ-OFFICE SOFTWARE FEATURES & BENEFITS INCLUDE:

- Enter field records, scale tickets, equipment maintenance, crop plans, and simple enterprise statements to track profitability
- Seamless data transfer between field and office saves time
- Store and manage guidance lines for controlled traffic strategies
- Import unlimited background maps such as soil test results, soil types, drainage lines, or other Shapefiles (SHP)
- Store and manage point, line, and area features for managing productive or non-productive regions

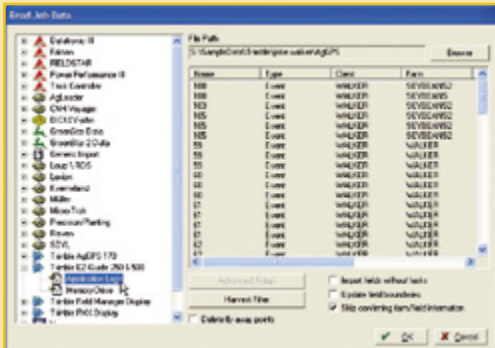


Trimble Agriculture. The line everyone follows.

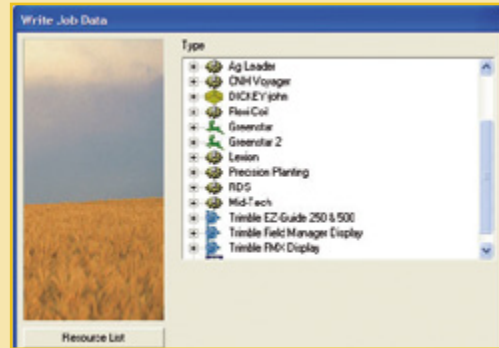
EZ-OFFICE 2010 SOFTWARE

FIELD RECORD KEEPING AND MAPPING FOR GROWERS AND AGRIBUSINESSES

READ JOB DATA



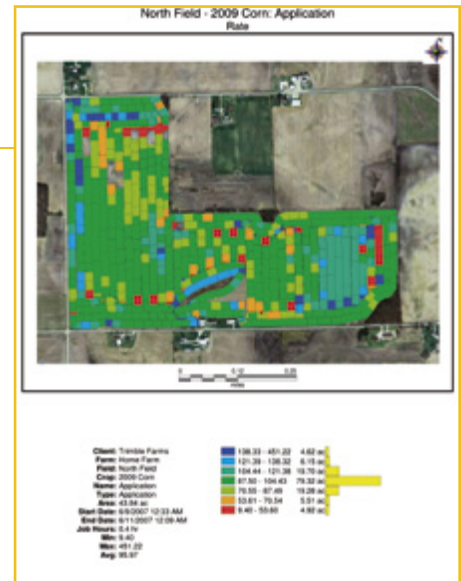
WRITE JOB DATA



- ✓ Read and write job data from Trimble displays including client/farms/fields, prescription maps, and other useful information
- ✓ Read and write data from other displays such as Ag Leader, John Deere, Case/New Holland, AGCO, DICKEY-john, Precision Planting, and others

MAPPING

- ✓ View and print yield maps, application coverage maps, variety maps, aerial photos, or any combination of layers
- ✓ View and print guidance lines with field boundaries
- ✓ View and print EZ-Office software prescription maps showing total quantity needed and cost to complete the job



Job Report					
Client	Trimble Farms				
Farm	Home Farm				
Field	North Field				
Crop	2009 Corn				
Field Area	140.00 ac				
Region 1: 8/10/07 12:33 AM - 8/11/07 12:00 AM					
Equipment	Area (ac)	Rate (gal)	Quantity	Unit Cost	Total
Sprink-Coupe 4900	43.84ac	1.00 gal	43.84 gal	\$30.00	\$1,315.20
Supplies					
Clear Fuel	43.84ac	0.05 gal	2.20 gal	\$4.20	\$9.24
Harvested Nitro 9.0 L	43.84ac	7.30 gal	40.00 gal	\$23.00	\$920.00
200-40L Liquid Ammonia - 1.00 gallon of Water	43.84ac	2.20 gal	24.11 gal	\$40.00	\$1,084.00
Alkaline	43.84ac	2.20 gal	24.11 gal	\$40.00	\$1,084.00
					Total: \$3,392.44
Field and Weather Information					
Growth Stage	Bare Ground	Soil Condition	Dry		
Application Method	Post-emergence	Soil Type	Clay		
Wet Condition	Clear	Dusting Method	F-puff		
Wind Direction	E-adj-southwest	Temperature	67°		
Wind Speed	0 mph	Humidity	65.00%		

FIELD RECORDS AND REPORTS

- ✓ Generate and print job reports showing the summary of the job performed in the field including a coverage map plus farm records including date, time, operator name, chemical applied, rates applied, and weather conditions
- ✓ Client, Farm, or Field reports can be sorted and printed for chemical, fertilizer, water, and seed usage

www.trimble.com

© 2008-2009, Trimble Navigation Limited. All rights reserved. Trimble, the Globe & Triangle logo, AgGPS, and EZ-Guide are trademarks of Trimble Navigation Limited, registered in the United States and in other countries. Connected Farm, EZ-Office, and FmX are trademarks of Trimble Navigation Limited. All other trademarks are the property of their respective owners. PN 022503-491A (11/09)

Trimble Agriculture Division
10355 Westmoor Drive, Suite 100
Westminster, CO 80021 USA
+1-913-495-2700 Phone
+1-800-865-7438 Phone (US Toll Free)

